



Hollman's

Hollman's
CORN
FLAKES

John & Will

SILO-HOTEL BY GULDSMEDEN 

MOIN!

In John & Will, we don't just have incredible Weser views from our round hotel rooms in former silo tubes, but also space for your parties, celebrations, conferences, and meetings.

Whatever you're planning, our Event Team will do their best to make it happen. Keep reading for some inspiration, and then let's chat about your event!

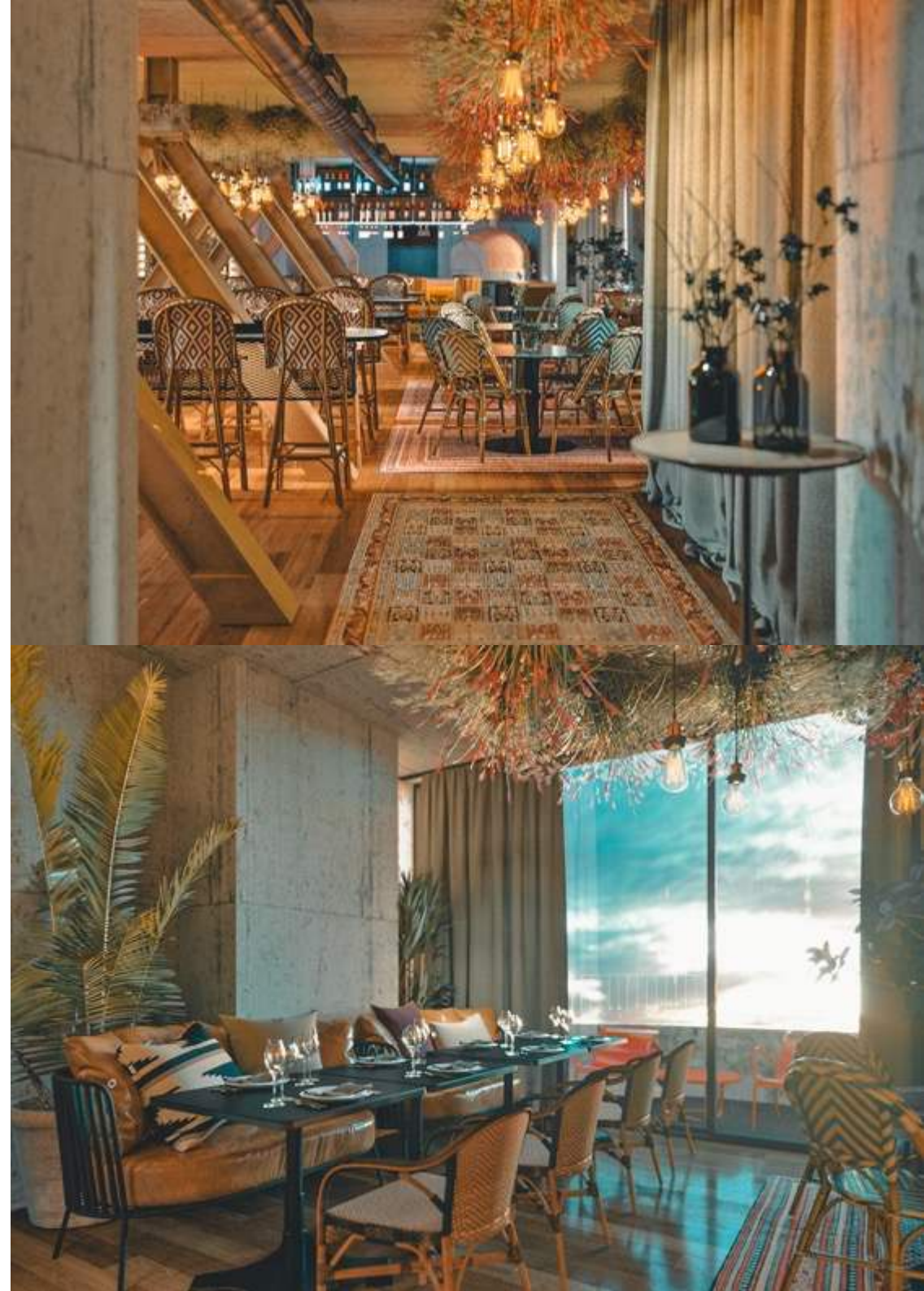
event@johnandwill-hotel.com →



EVENT ROOMS

DACHSTUUV

The Dachstuv is doubly special: it's our highest event space, and it has the steel beams that anchor the Kellogg's sign on the roof. That's why we have a fixed seating plan up here. Up to 90 people can be seated, with room for boogying on the dance floor. Whether it's a buffet, set menu, or pizza from our built-in pizza oven, catering options are limitless. And of course, we have a great sound system to really get your parties started.

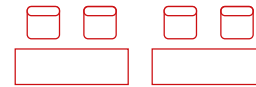


EVENT ROOMS

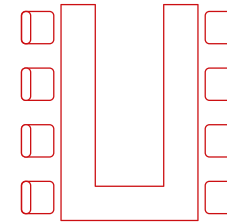
BOVEN7

Boven 7 is our largest event venue and has space for a lot of guests. It has great views, windows that can be darkened, a built-in sound system, a bar, and one or more large screens.

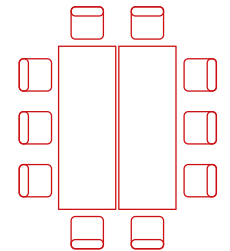
- Area: 350 m²
- Length: 22 m
- Width: 16 m
- Private bar
- Sound system with microphone



CLASSROOM
80 PLACES



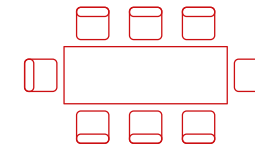
U-FORM
90 PLACES



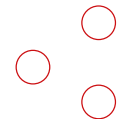
BLOCK
140 PLACES



SEATING ROWS
160 PLACES



BANQUET
150 PLACES



RECEPTION
200 PLACES

MEETING ROOMS

EEN, TWEE & DREE

On the ground floor, you'll find our small meeting rooms named Een, Twee, and Dree. Two of these rooms feature a long live-edged table and built-in screens. The third room has flexible seating and a mobile screen.

EEN

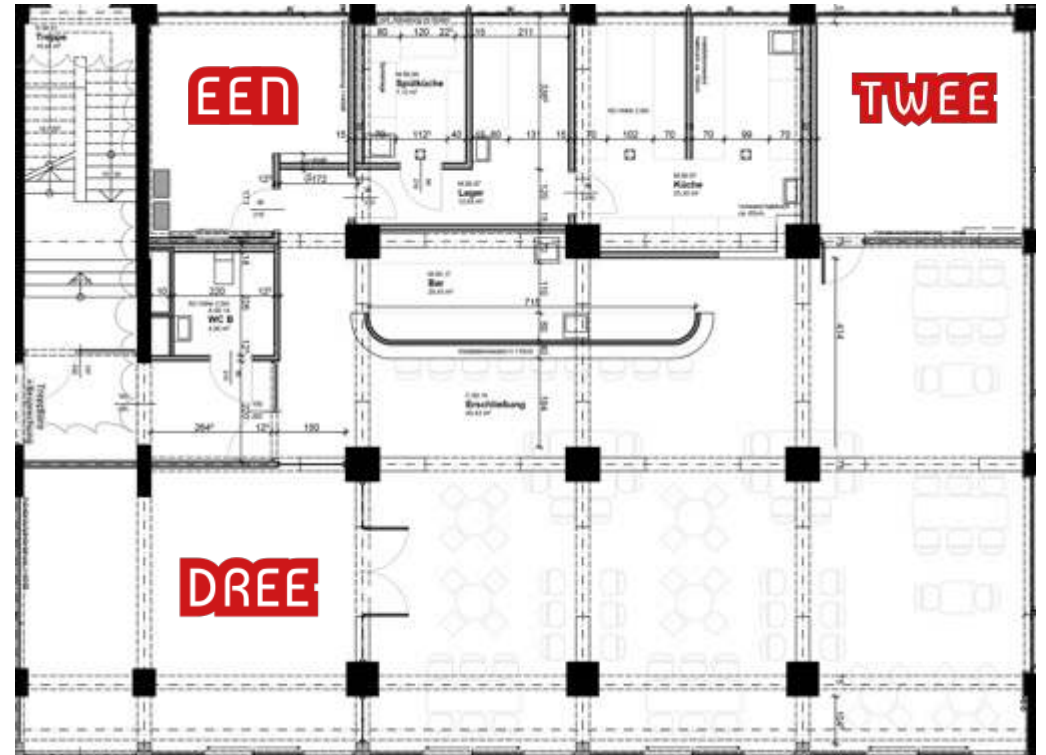
For up to 6 people, 19 m²

TWEE

For up to 12 people, 23 m²

DREE

For up to 26 people, 45 m²





EATING & DRINKING

One of the most important questions when planning an event: what's on the menu? John & Will is surrounded by exciting dining options for you to choose from. We can reserve seats for you at the restaurants or arrange catering to be delivered directly to your meeting room.



[vitaminlager.de](https://www.vitaminlager.de) →



[ziomanu.de](https://www.ziomanu.de) →



[hopfenfaenger.de](https://www.hopfenfaenger.de) →



WESER VIEWS

from all rooms.

Check out our
[room categories](#) →

PACKAGES

ALL-DAY PACKAGE:

from
93,50€

- Two coffee breaks
- Lunch
- Equipment: LCD-Screen, 1x pinboard, 1x flipchart
- Moderation kit, pens, and notepads

HALF-DAY PACKAGE:

from
78,50€

- One coffee break
- Lunch
- Equipment: LCD-Screen, 1x pinboard, 1x flipchart
- Moderation kit, pens, and notepads

Our event rooms are also available to rent by the hour.



The image shows a modern, industrial-style lobby. In the background, there is a bar with a large, multi-tiered chandelier made of many small, colorful glass pieces hanging above it. The bar has several bottles on shelves and a counter with stools. To the right, there is a lounge area with a large, dark-colored sofa and a low, rustic wooden coffee table. A potted plant is on the table. The floor is covered with patterned rugs. The walls are made of concrete, and there are large windows or glass partitions. The overall atmosphere is warm and sophisticated.

FEIERABEND

We'll serve you a nightcap
after the event in the „Barception“
in our Lobby.

An aerial photograph of a waterfront promenade. On the left, there's a paved walkway with several buildings, including one with a large mural of a woman's face. A yellow boat is docked at the pier. In the center, a small motorboat is moving across the water, leaving a white wake. On the right, a large, empty cargo ship is docked. A large red circle is overlaid on the right side of the image, containing contact information in white text.

CONTACT

Auf der Muggenburg 50
28217 Bremen, Germany

+49 (0)421 - 427 68 0
event@johnandwill-hotel.com